

Newaygo County Online Map Viewer

Our new online map view allows you to locate and view geographic features within Newaygo County. There are several features that allow you to search for property information, streets, addresses, digital aerial photography and several other physical features of the county. This training will provide you with the basic knowledge needed to utilize the map viewer to its fullest potential.

In the past there have been separate maps available to the public and county officials. With the new map viewer there is one map that is available to county officials and the public. When the map viewer is opened, it will always default to the full view of Newaygo County and its jurisdictions.



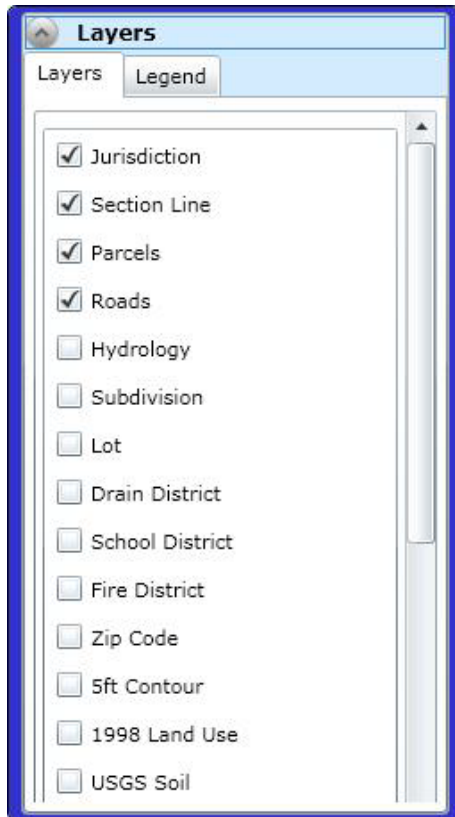
From this initial view, you can use the vertical navigation bar or the search box to locate features and find information contained in the map. This booklet will explain the function of these tools and how best to navigate to specific information.

The Best Ways to Find Specific Data

Parcels

- By PIN, Owner Name – Enter the PIN or owner name in the Search for box.
- By Address – Use the address locator tool or type the name of the road into the Search for box.
- By Location – If the general location of the parcel is known, zoom into the area and locate it by road names and aerial photography.

As you zoom into different extents certain layers are turned on or off to help you navigate. For example, when you first open the maps online you can only see the jurisdiction layer and names. As you zoom in closer other layers such as section lines, parcels lines, and roads will turn on. By using the layers drop-down menu you can control what layers you want to view. All of the layers listed under the roads layer have to be turned on manually by checking the box next to it. Once you zoom into a specific area, you can use the identify tool to view information about individual layers in the identify drop-down window.



The Layers/Legend Drop-down Window

- This window allows you to turn different layers on and off to customize the information shown on the map.
- The jurisdiction, section lines, parcels, and road layers are turned on by default when you begin your map session.
- You can also click on the Legend tab to see what the symbols represent on the map display.
- The best way to become comfortable with all of the layers is to turn it on by itself and pan around to view the data.



The Identify Drop-down Window

When you identify an area on the maps, the identify drop-down window will appear with the Parcel owner name as the primary identifier.

In the drop down window you will see all of the layers that lay with the area you selected on the map.

The names of the layers are given along with the primary attribute for each layer. You can also click on a specific layer in the list to see more specific information.



Map Viewer Icon Guide



Zoom In - Click on this icon and drag a box around the area you want to zoom into.



Zoom Out – Click this icon and drag a box to zoom out of your current extent.



Previous Extent – Shows your past views from this map session.



Next Extent – Goes back to the most recent views.



Full Extent – Shows the full map view of the county.



Identify – Use this icon to click on a feature in the map to identify the feature's details.



Print – Opens the print window and allows you to print the current extent of the map.



Address Locator – Zooms into a specific address when entered.



Linear Measure – Allows you to measure distances and perimeters.
The distances are shown in miles, feet, and meters.



Buffer/Notification – Allows you to create a buffer on a parcel, road, or hydrology feature

Search for

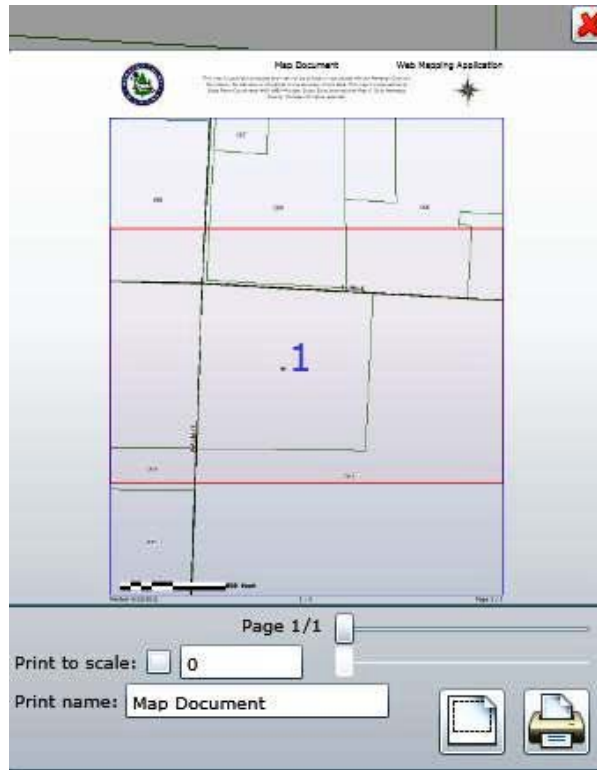
The Search function allows you to do a general search for parcels owner names, parcel PINs, road names, subdivisions names, and historical parcel names and PINs.

The Navigation Wheel has several functions. It will allow you to:



- Zoom in and out by clicking on the + or - buttons
- Pan North, South, East and West by clicking on the directional arrows on the wheel
- Rotate the map by clicking and holding on the wheel and dragging it
- Reset the map to North by clicking the small triangle at the bottom right
- Zoom out to the full extent of the map by clicking on the globe

Printing Online Maps



Print to scale:

Adjusts the scale of the printed map



Print name:

Adds a title to the top of the printed map page

To print a map, click on the **Print Map** icon on the left of the screen and a print preview window will open.

In this window you will be able to adjust the extent and scale of the printed image.

You can also add your own title to the printed document

← Print

↑ **Define extent for printing** – Allows you to adjust the print area.

Locating an Address



Locate a Street Address ✖

Street Address

Address Candidates

1087 E NEWELL ST, 49349

Locate a Street Address ✖

Street Address

Address Candidates

123 W PINE ST, 49327

123 N PINE AVE, 49349

123 N PINE AVE, 49349

123 S PINE AVE, 49349

123 E PINE ST, 49412

123 W PINE ST, 49412

The **Address Locator** will zoom into a given address when entered, placing a red dot at the edge of property nearest the road. This tool is based on the county's street center line data and is only as accurate as the data within that layer. The corrections made to this layer in the future will make this tool more precise.

If a road name is entered that occurs more than once in the county it will display multiple results along with the roads zip code. Each of these may be clicked on and zoomed into to check their location.

If an address cannot be located, try adding or removing the directional prefix for the road such as the East in E Newell.

You can also use the Search for box to find the road name and navigate from there.

Searching for an Individual Feature

When using the **Search for** box, you may get multiple returns as this box will search for the given data in parcels, owner names, parcel PINs, road names, subdivisions names, and historical parcel names and PINs.

When multiple returns occur, they will be displayed in a window at the bottom of the screen. You can scroll through them to find the specific item you are searching for. Each result will be listed with the layer it came from, the field where the data was found, and the complete information returned.

In this example, the name 'Smith' was entered and brought back multiple returns. Some of the returns are parcel owner names and other are road names that contain the word 'Smith'.

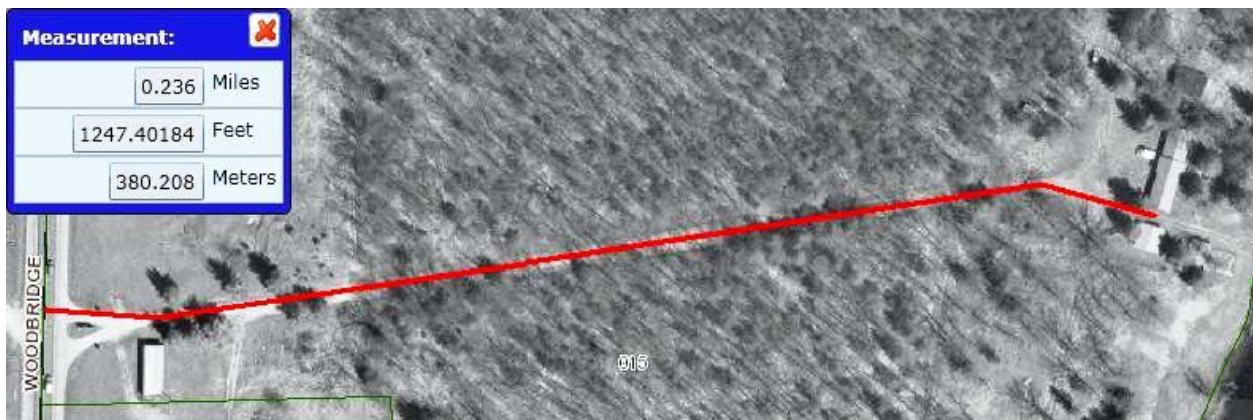
Search for

Layer ID	Layer Name	Found Field Name	Found Field Value
2	Parcels	OWNER_NAME	SMITH JOSEPH E ET AL SMITH CHARLES
3	Roads	NAME	BLACKSMITH
3	Roads	NAME	BLACKSMITH
3	Roads	NAMF	SMITH

Layer ID	Layer Name	Found Field Name	Found Field Value
2	Parcels	OWNER_NAME	SMITH JOSEPH E ET AL SMITH CHARLES
3	Roads	NAME	BLACKSMITH
3	Roads	NAME	BLACKSMITH
3	Roads	NAMF	SMITH

↑ To zoom into a specific return, click on the row to select it, right click and select '**Zoom To...**' and the map will zoom to that feature and highlight it with a red line or box.

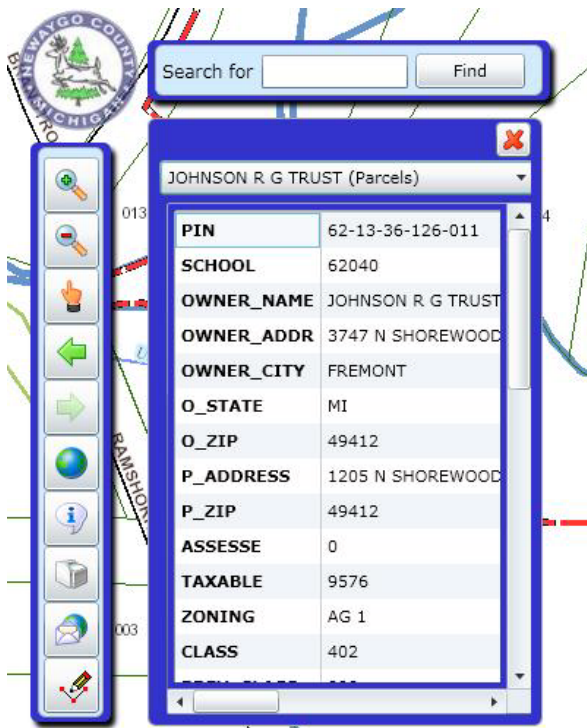
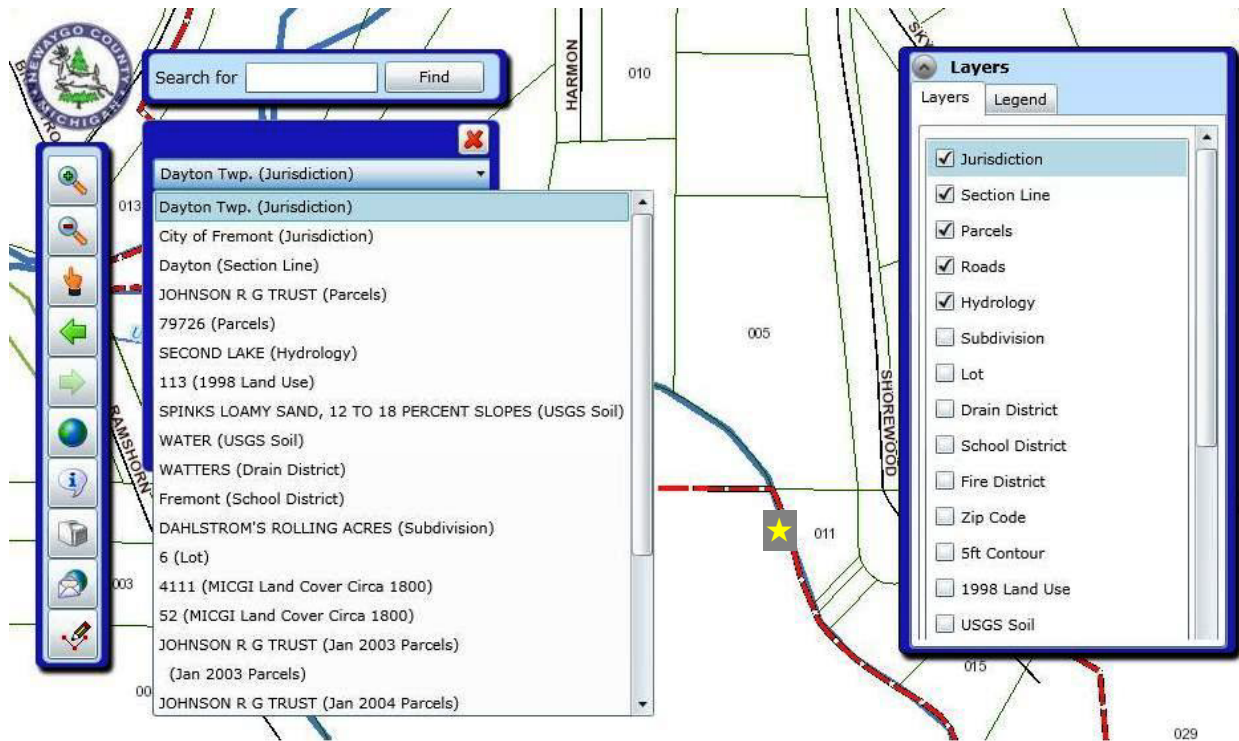
The Linear Measure Tool



The **linear measure** tool allows you to measure a distance or perimeter. Click on the linear measure tool and trace or draw the object you want to measure on the map, when you are finished double click and a measurement window will appear with the distance in miles, feet, and meters.

When you use the identify tool, the drop-down window will show you all the layers that correspond to the point that was selected.

This drop-down window shows all the layers that lay on the point of the yellow star below. From this drop down selection, you choose a layer to get more detailed information from the layer's attributes.



By clicking on 'Johnson R G Trust' parcel layer the property information for that parcel is displayed.

Once the information is viewed, you can click on the drop-down arrow again to return to the full list of layers for that area.

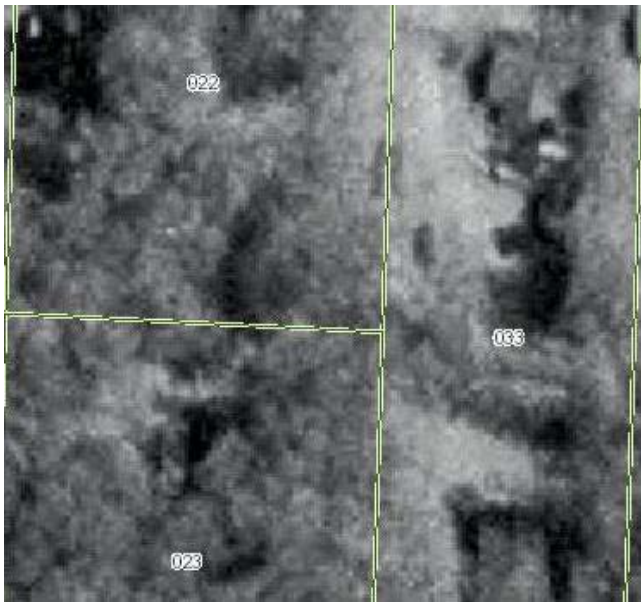
The parcel layer is the one layer with the most information in it as it is tied to the county's assessing data.

In some cases, depending on the area of the map selected, you may get more than one return for a particular layer. In the example above, there are two parcel layers shown. This is simply because the area selected lies on the parcel line between two properties and so the drop-down window listed both parcels.

Viewing Digital Aerial Photography

As with the past web map, the new web map view also has aerial digital photography of the county including the new color orthophotography that was completed in the spring of 2010. The 1996 and 2003 digital photographs are in black and white and are still very useful in viewing features such as hydrology and structures. There are two different orthophotos included in the 2010 pictures. There is a county-wide picture with a 1 ft resolution and a high resolution area of 6in resolution that includes the cities of Grant and Newaygo and the area in between the two. The four pictures below show a snapshot of the same area.

1996



2003



2010 1ft Ortho



2010 6in Ortho

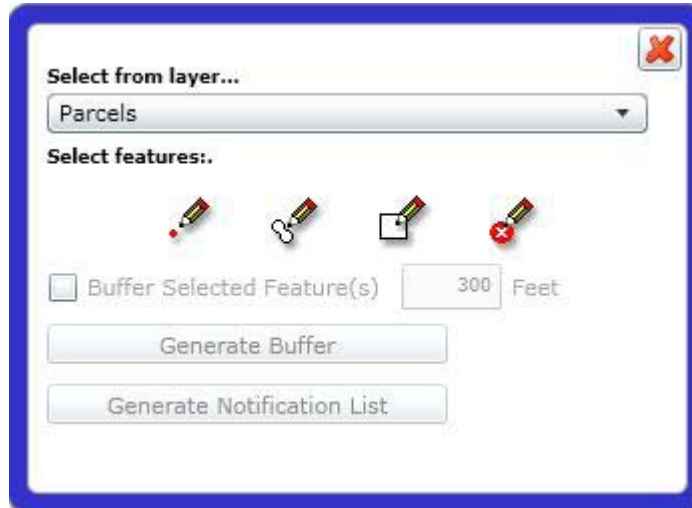


Often toggling between the photographs can provide a better picture of different features depending on resolution of the photograph, the angle of the shadows, the amount of tree cover, and the color of the feature being viewed.

The Buffer/Notification Tool



The buffer tool will allow you to create a buffer around a parcel, road or hydrology feature. When you click on the Notification tool a larger window will open.



To use the buffer tools above zoom into the feature you want to buffer and select it by using one of select feature options from the window above. Next, enter in the number of feet you want your buffer to be and click on 'Generate Buffer'. This will create a buffered area on the map. You can simply view the results or you may also have the resulted data exported into an Excel or web format that can be viewed and printed.

